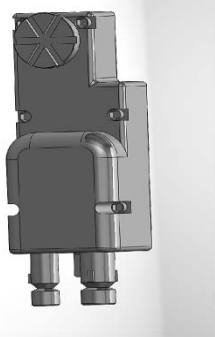
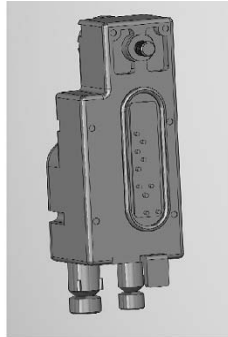




“The Source for Power”



Front



Back

## Rifleman AN/PRC 154 Charger dual input and dual output side connector (sidePAN)

**EFB P/N: 1-15159-00**

### **Charger Description**

EFB's Rifleman AN/PRC 154 Charger with side connector provides an output to exchange data between an EUD and Radio in a vest or personal equipment mounted package. The Sidehat connected to charger may be used as part of the SWIPES™ unit or separately powered using the SWIPES™ Power Cable, AM/GF (EFB P/N 1-15500-00). The Sidehat connector provides 5V, up to 1A, of power for USB or other radio accessories. There are no LED indicators for the operation of this power.

### **Compatible with the following batteries & Power Source**

BA-8180/U, BA-8140/U, ZA-8140S, ZA-8150, IPS HUB, BA-5590/U, BA-5390/U, BA-2590/U, BB-390/U, BB-590/U

### **DC Input**

5 VDC Nominal

### **Output**

1 Amp 5 VDC Maximum

### **Operational Temperature**

-20°C to +60°C (-4°F to +140°F)

### **Storage Temperature**

-40°C to +100°C (-40°F to +212°F)

### **Dimensions (WxDxL)**

8.4201 X 2.8448 X 2.6416 Centimeters (3.315 x 1.12 x 1.040 Inches) Nominal

### **Weight**

0.06486 kg (0.143 lb) Nominal

### **Environmental**

-Humidity 95%

-Altitude 50,000 ft